



The Versatile BI Solution!

Please note: SELF-SERVICE DATA is a part of
Click&DECiDE
Business Application Intelligence

Version 2015
Setup Manual

Last Edition March 8th, 2016

V15.1 and greater



Table of Contents

- 1. System Requirements 3
 - 1.1. Desktop Version (Express Edition) 32-bit3
 - 1.2. Desktop Version (Express Edition) 64-bit3
 - 1.3. Web Server Version (Enterprise Edition) 64-bit3
- 2. Environment 3
 - 2.1. Desktop Version (Express Edition or Click&DECiDE Builder) 32-bit3
 - 2.2. Desktop Version (Express Edition or Click&DECiDE Builder) 64-bit4
 - 2.3. Web Server Version (Enterprise Edition) 64-bit4
- 3. Installation 4
 - 3.1. Running the Setup.exe File5
 - 3.1.1. Complete Setup7
 - 3.1.2. Click&DECiDE Builder7
 - 3.1.3. Click&DECiDE Server7
 - 3.1.4. Click&DECiDE Web Portal7
 - 3.1.5. Custom Setup7
 - 3.2. What are the Data Sources automatically installed?8
 - 3.2.1. Click and DECiDE Connect:8
 - 3.2.2. Click and DECiDE Model:8
 - 3.2.3. Click and DECiDE iSeries TCP/IP:8
 - 3.2.4. Click and DECiDE Oracle:8
 - 3.2.5. Click and DECiDE SQL Server:8
 - 3.2.6. Click and DECiDE Excel:8
 - 3.2.7. Click and DECiDE ODBC:9
 - 3.2.8. Click and DECiDE Web Service:9
 - 3.2.9. Click and DECiDE ADO Multidimensional (MDX):9
 - 3.2.10. Click and DECiDE OLEDB (MDX and Other):9
 - 3.2.11. Click and DECiDE SAP:9
 - 3.2.12. Click and DECiDE Web Menu:9
 - 3.2.13. Click and DECiDE Google BigQuery:9
 - 3.2.14. Click and DECiDE Teradata:9
 - 3.3. Running the Configuration wizard 11
 - 3.3.1. License Certificate 11
 - 3.3.2. Optional Google BigQuery Data Source 12
 - 3.3.3. Authentication Mode and Mail Server 13
 - 3.3.4. Optional Support configuration in the Web Portal for end-users 15
 - 3.3.5. Local Database Configuration 16



1. System Requirements

The Click&DECiDE setup program requires the following software's to be installed on your computer. Unless specified otherwise, the components are automatically installed if missing

1.1. Desktop Version (Express Edition) 32-bit

- Microsoft Office Web Components 2003
- SQL Server Native Client 2005 SP3
- Microsoft .NET Framework 2.0 or greater
- Microsoft Visual C++ 2008 x86 Redistributables
- Microsoft Visual C++ 2010 x86 Redistributables

1.2. Desktop Version (Express Edition) 64-bit

- Microsoft .NET Framework 4.5 SP1 or greater (*)**
- SQL Server Native Client 2005 SP3
- Microsoft Visual C++ 2010 x64 Redistributables
- Microsoft Visual C++ 2012 x64 Redistributables

1.3. Web Server Version (Enterprise Edition) 64-bit

- Microsoft IIS (default version from system version) (*)**
- Microsoft .NET Framework 4.5 SP1 (*)**
- Microsoft Office Web Components 2003 (**)
- SQL Server Native Client 2005 SP2 or greater
- SQL Server 2008 SP3 or greater
- Microsoft Visual C++ 2010 x64 Redistributables
- Microsoft Visual C++ 2012 x64 Redistributables
- Java 7 Update 15 (64-bit)

(*) Must be installed before launching Click&DECiDE Setup.

(**) only required for the use of the Microsoft Cubes (OWC)

Note: If no previous SQL Server is found, the SQL Server Express 2008 is proposed to be installed.

About the IIS installation, see the FAQ:

http://www.clickndecide.com/sites/default/files/assets/files/faq/kba203_how_to_install_iis.pdf

About the IIS configuration, see also the FAQ:

http://www.clickndecide.com/sites/default/files/assets/files/faq/kba201_how_to_parameterize_iis_on_windows_2008_for_clickndecide_1.pdf

and

http://www.clickndecide.com/sites/default/files/assets/files/faq/kba241_how_to_parameterize_iis_on_windows_2012_for_clickndecide.pdf

If you are using Microsoft SQL Server 2012, see the FAQ:

http://www.clickndecide.com/sites/default/files/assets/files/faq/kba242_how_to_connect_to_sql_server_2012.pdf

2. Environment

2.1. Desktop Version (Express Edition or Click&DECiDE Builder) 32-bit

System:

- Windows 7 (32-bits or 64 bits)
- Windows 8.1 (32-bits or 64 bits)
- Windows 10 (32-bits or 64 bits)
- Windows 2008 R2
- Windows 2012 R2

Memory:

- Minimum RAM: 2 GB
- Minimum Hard disk: 200 MB without samples, 700 MB with samples



2.2. Desktop Version (Express Edition or Click&DECiDE Builder) 64-bit

System:

Windows 7 (64 bits)
Windows 8.1 (64-bit)
Windows 10 (64-bit)
Windows 2008 R2
Windows 2012 R2

Memory:

Minimum RAM: 2 GB
Minimum Hard disk: 200 MB without samples, 700 MB with samples

2.3. Web Server Version (Enterprise Edition) 64-bit

System:

Windows 2008 R2
Windows 2012 R2

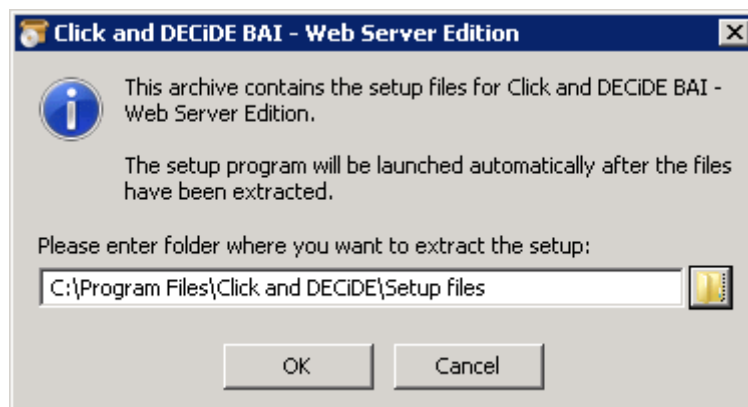
Memory:

Minimum RAM: 4 GB
Minimum Hard disk: 1 GB

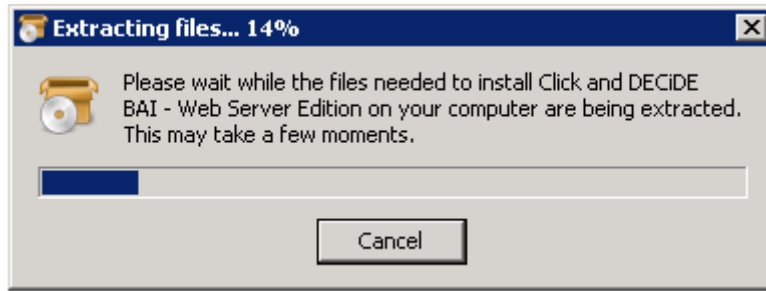
3. Installation

If you have downloaded the software, please perform the following steps:

1. Double-click the downloaded file (for example CnD-BAI.WebServer.15.1.0.5690.exe) or using the permanent links giving always the most recent version:
 - For Click and DECiDE BAI Enterprise Edition:
 - http://license.clickndecide.com/downloads/cndent_latest.aspx
 - For Click and DECiDE BAI Express Edition:
 - http://license.clickndecide.com/downloads/cndexp_latest.aspx
2. Extract the content by default to the following directory:
C:\Program Files\Click and DECiDE\Setup files



Click OK

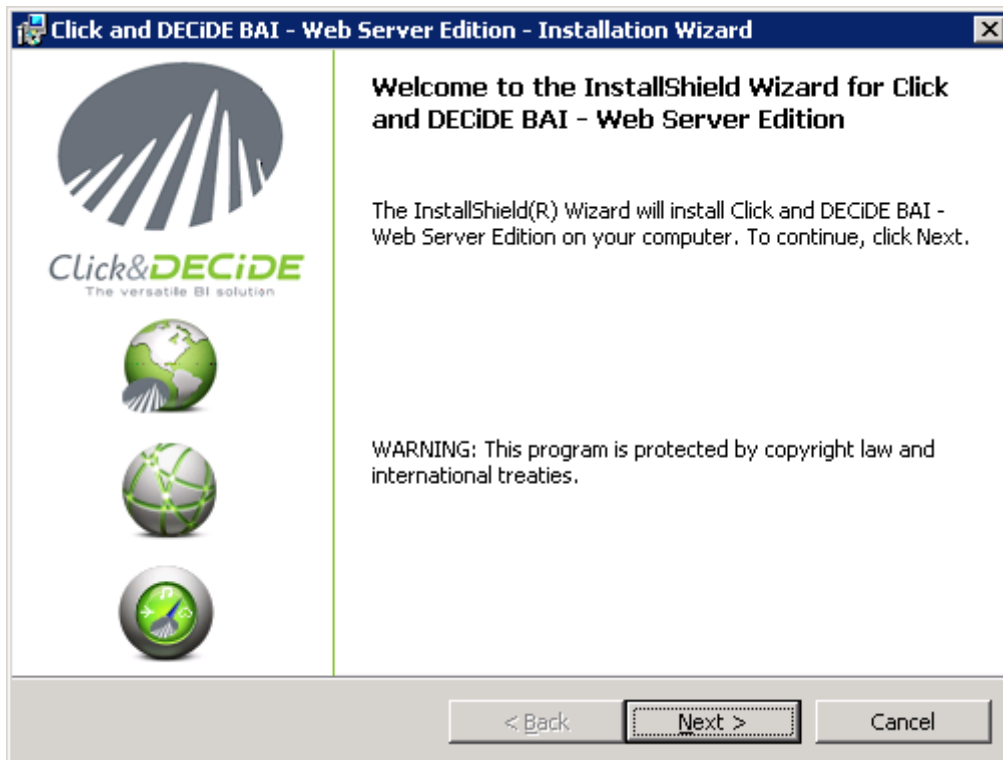


3. Note the Setup.exe file will automatically run to start the installation.

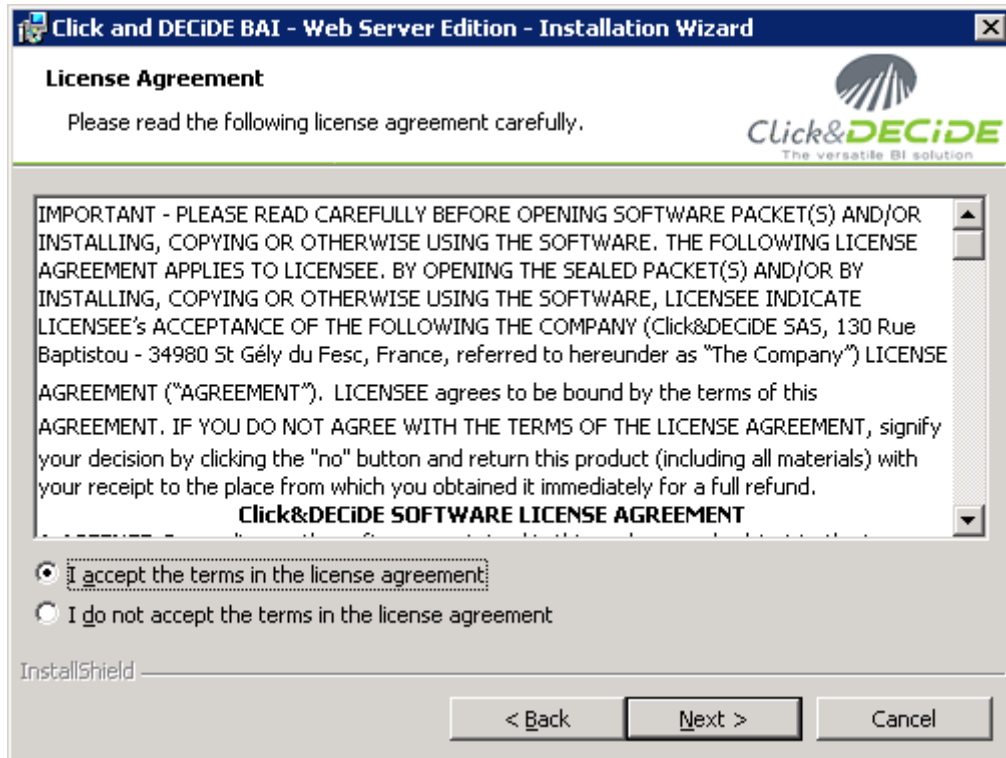
3.1. Running the Setup.exe File

Perform the following steps:

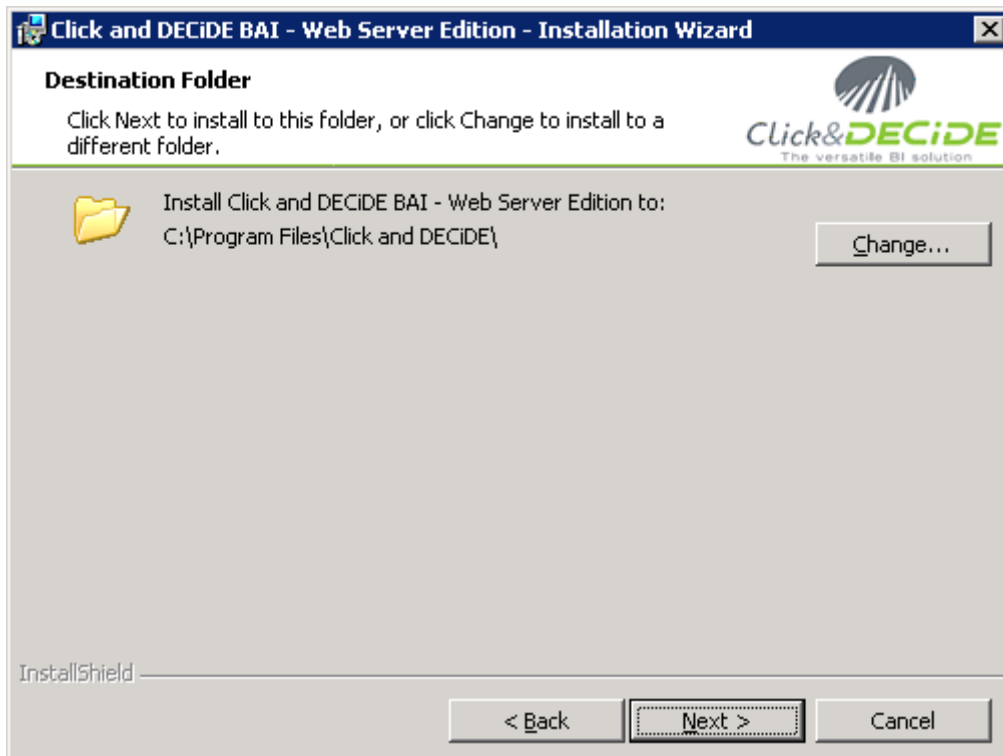
1. If you have a CD-ROM: double-click the **Setup.exe** file unless your CD drive is defined with an automatic start, or, if you downloaded the software, double-click the downloaded file. The following screen will appear:



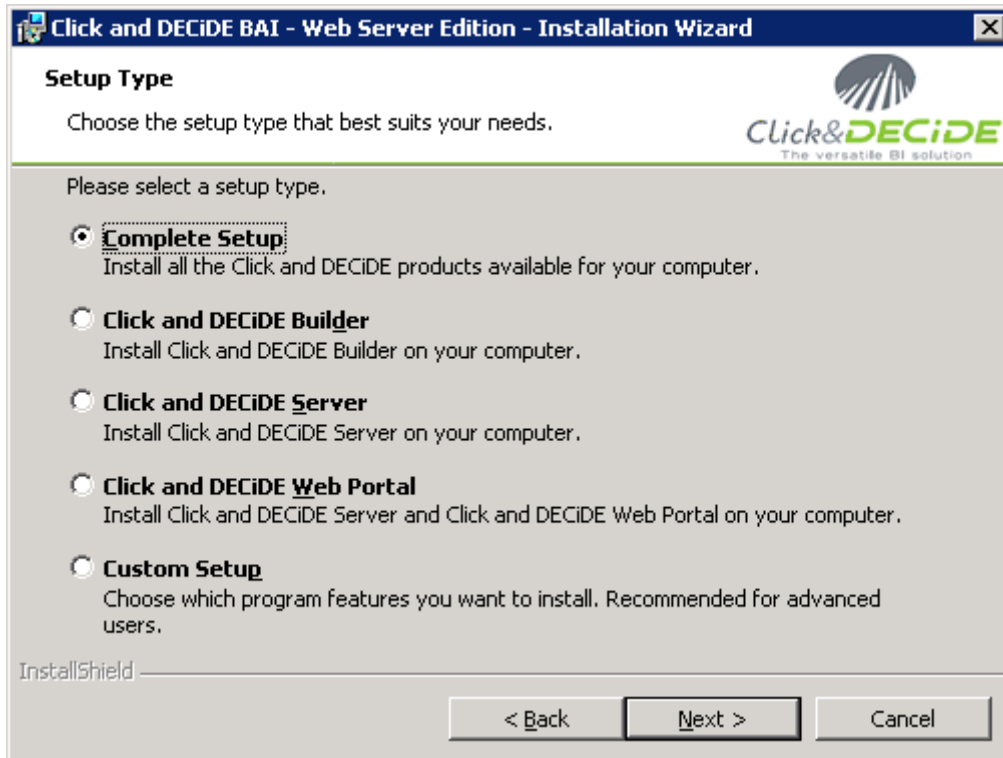
2. Click **Next>**
3. Select **I accept the terms in the license agreement** and click **Next>** to continue.



4. Click **Next>**, or click **Change...** to install the software to a different folder.



5. Click **Next>** to install all the Click&DECiDE products or select the **Setup Type** that best suits your needs.



IMPORTANT NOTES

3.1.1. Complete Setup

This option will install everything except the **Management Console**. If you wish to install this component, see the [Custom Setup](#) paragraph below.

3.1.2. Click&DECiDE Builder

This option will install only Builder as well as all Data Sources.

3.1.3. Click&DECiDE Server

This option will install only Administration Manager and Click&DECiDE Model as well as all Data Sources. (Web Menu and Web Portal are not installed).

3.1.4. Click&DECiDE Web Portal

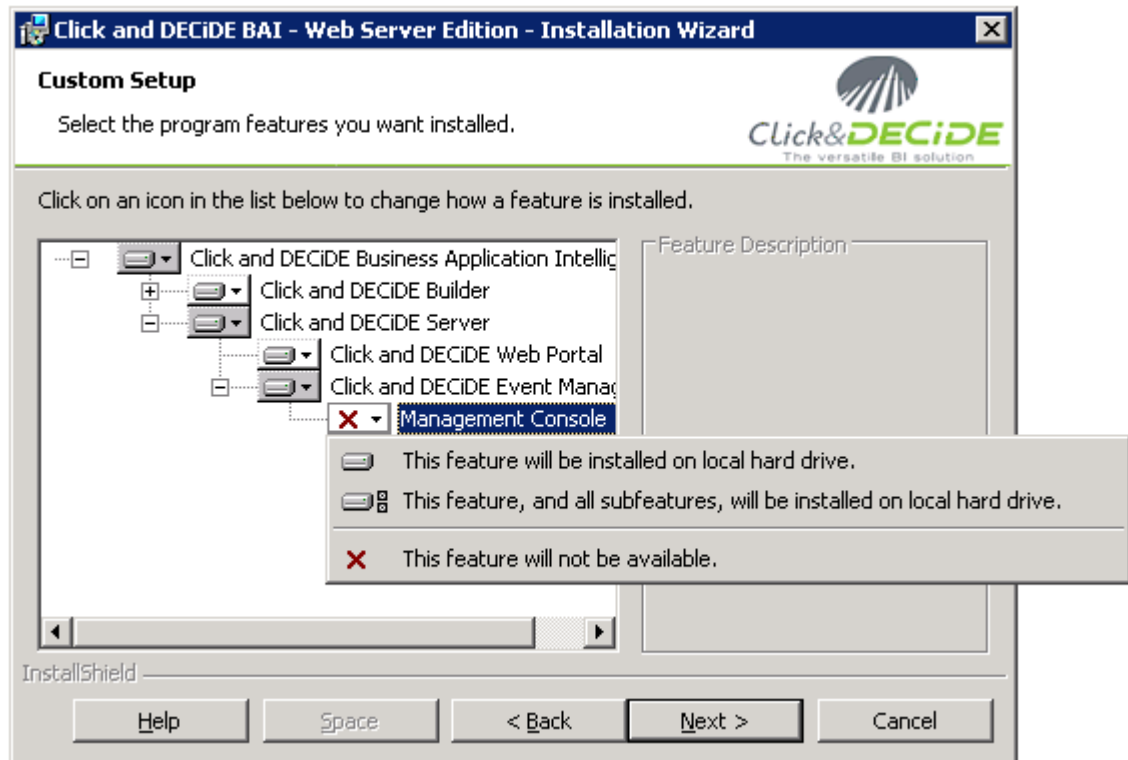
This option will install Administration Manager, Click&DECiDE Model, Click&DECiDE Web Menu, Click&DECiDE Web Portal as well as all Data Sources, but without Click&DECiDE Builder.

3.1.5. Custom Setup

This option will install the specified components. By default all components are selected except the **Management Console**. If you wish to install this component, perform the following steps:

1. Click **Custom Setup**.
2. Click **Next>**.
3. Select the **Click and DECiDE Event Manager** branch.
4. Select **Management Console**.
5. Select **this feature will be installed on local hard drive**.

Note: this module is reserved to the Administrator or Advanced Users. It can be used in relation with the Click and DECiDE Event Manager Engine, for Alert Management and Web Server Statistics.



3.2. What are the Data Sources automatically installed?

The following drivers are installed:

3.2.1. Click and DECiDE Connect:

This data source allows a client workstation with only Click and DECiDE Builder to:

- Either: connect to a data source defined in the full Enterprise Edition installed on a Server,
- or create a data source in an Enterprise Edition installed on a Server but pointing to another server where an Enterprise Edition has also been installed.

3.2.2. Click and DECiDE Model:

This data source allows to access to a Model defined with the Click and DECiDE Model tools (Enterprise Edition).

3.2.3. Click and DECiDE iSeries TCP/IP:

This data source allows to access to an IBM iSeries machine (AS/400) using the TCP/IP protocol. **Note:** a Host Program must be installed on the iSeries (AS/400).

3.2.4. Click and DECiDE Oracle:

This data source is not supported anymore under 64-bit platform, but you can access to an Oracle database using a 64-bit ODBC Oracle driver.

3.2.5. Click and DECiDE SQL Server:

This data source allows to access to an SQL Server database, installed by default when you install Click&DECiDE for the first time.

3.2.6. Click and DECiDE Excel:

This data source allows to create an ODBC data source against an Excel. Just drag and drop the Excel file in the Data Source Tab in Administration Manager to get this data source automatically created.



3.2.7. Click and DECiDE ODBC:

This data source allows to access to any compliant ODBC drivers, such as MS-Access, Excel, Text, SQL Server, Oracle, My SQL, Informix, Progress 10, DB2, etc. according to the one installed on your machine.

3.2.8. Click and DECiDE Web Service:

This data source allows to access to any Web Service (SOAP, XML).

3.2.9. Click and DECiDE ADO Multidimensional (MDX):

This data source allows to execute queries on multidimensional Microsoft SQL Server Analysis Services Cubes.

3.2.10. Click and DECiDE OLEDB (MDX and Other):

This data source allows to access to any compliant OLEDB drivers.

3.2.11. Click and DECiDE SAP:

This data source allows to access to any SAP Data Source (Cubes and **BEx Queries**, Queries, BAPI/RFC etc.)

3.2.12. Click and DECiDE Web Menu:

This data source allows to access to any Click&DECiDE Web Menu queries (*.wmu) so that Click&DECiDE Builder can provide existing queries already prepared to the end-users.

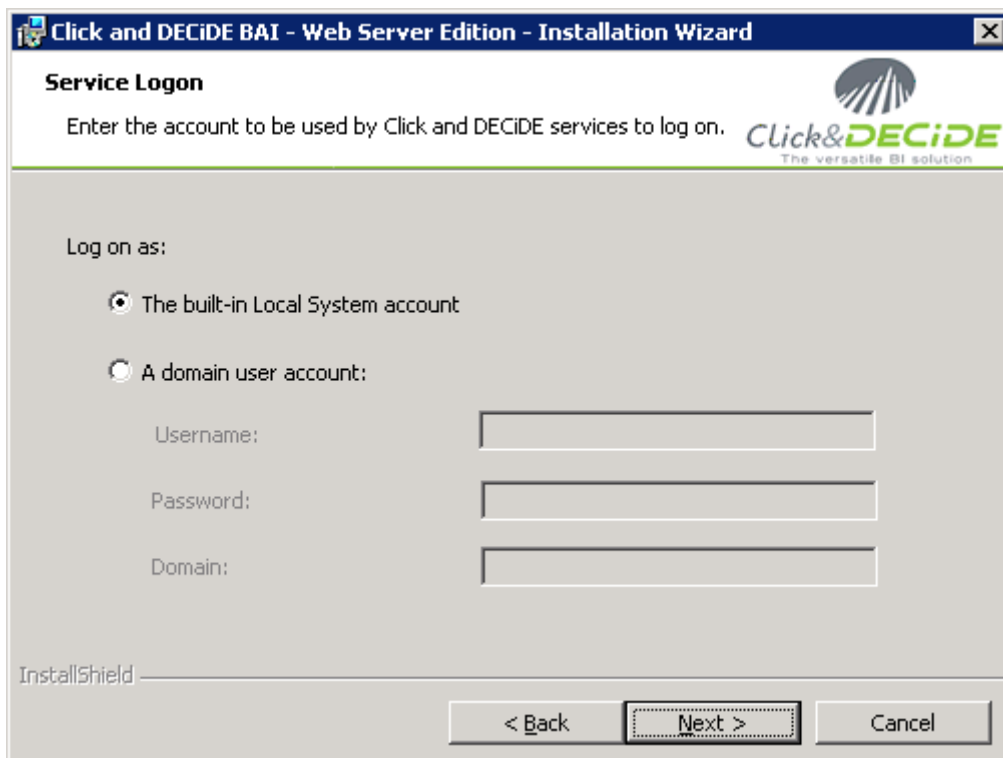
3.2.13. Click and DECiDE Google BigQuery:

This data source allows to access to a **Google BigQuery** database.

3.2.14. Click and DECiDE Teradata:

This data source allows to access to a **Teradata** database.

6. Click **Next>** to continue the installation. The **Service Logon** screen appears

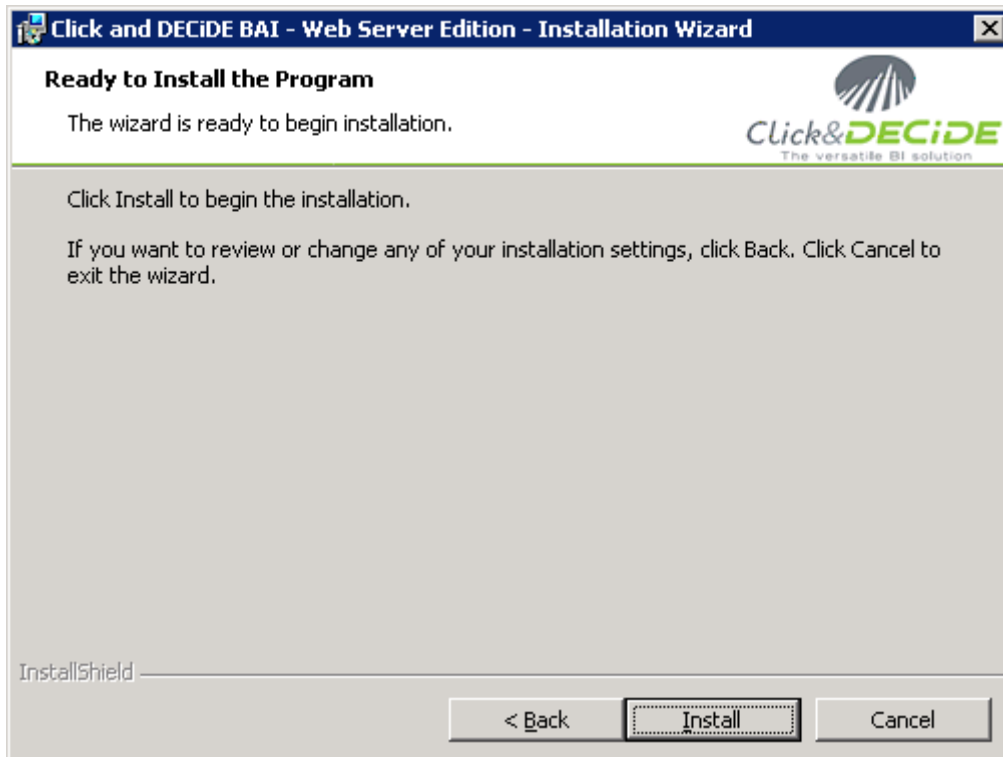


The built-in Local System account: by default, all Click and DECiDE services will run under **The built-in Local System account**.

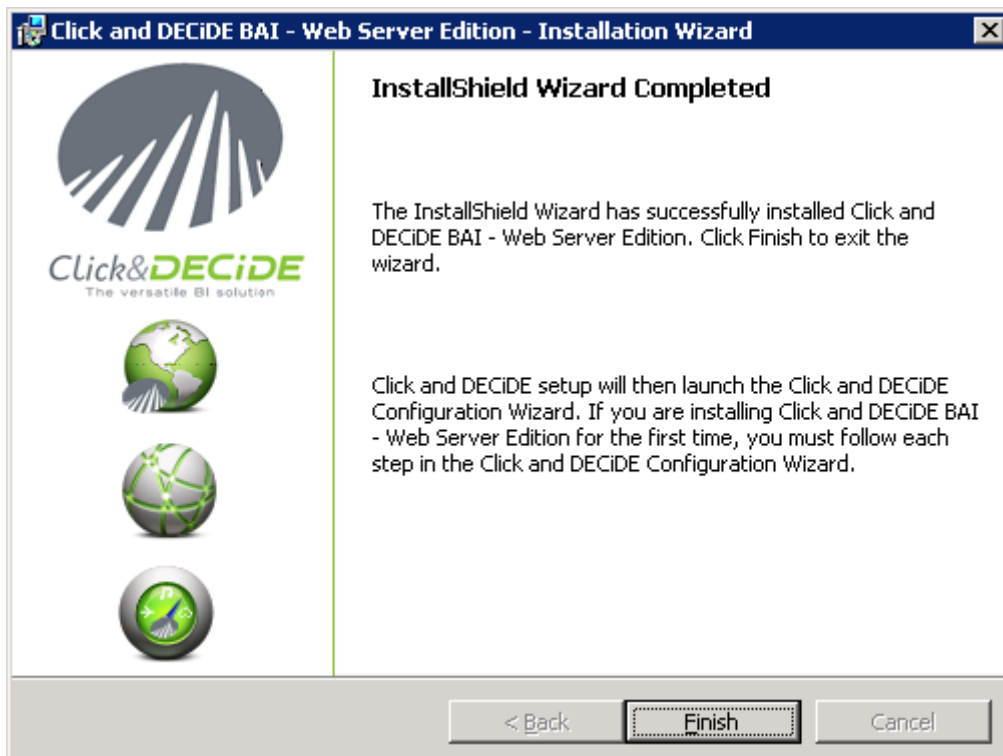
A domain user account: specify a domain user account if you wish to run the services under another profile.



7. Click **Next>**. The **Ready to Install the Program** message appears.
Click **Install** to launch the installation or **<Back** to modify a previous option.



8. Note the following screen appears once all the programs have been installed.



9. Click **Finish**. It is not anymore necessary to reboot the computer with this Version 2015 64-bit.

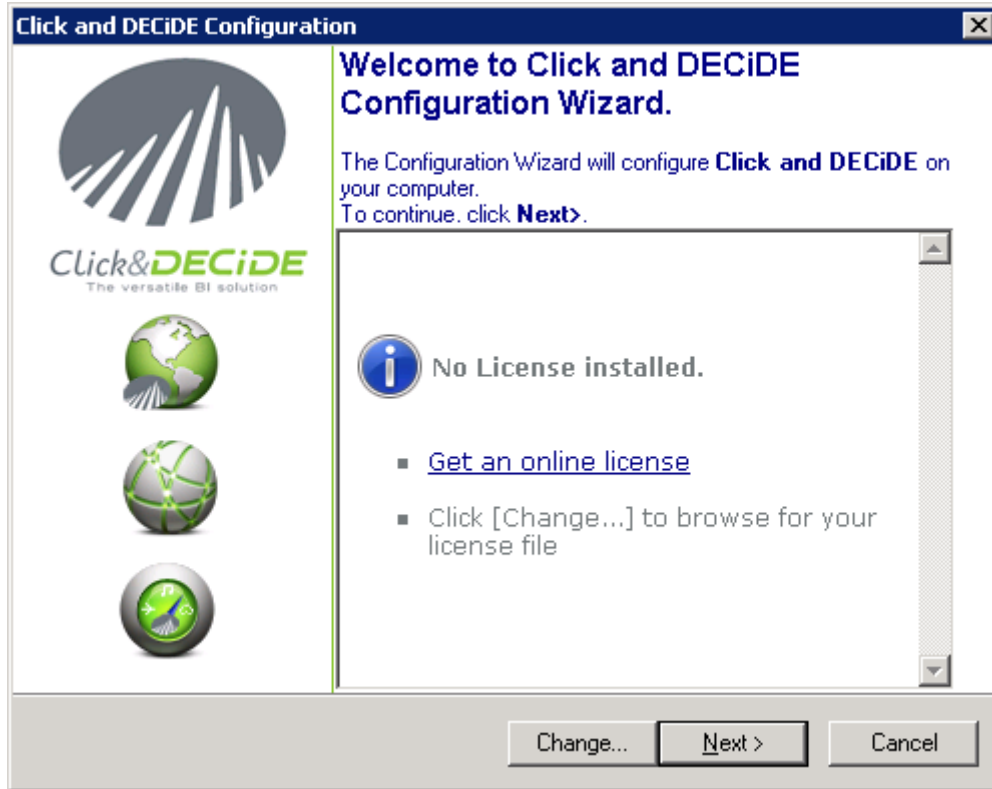


3.3. Running the Configuration wizard.

Wait for the Configuration wizard starting automatically

3.3.1. License Certificate

10. Click **Change...** to select your license certificate or click **Get an online license** if you do not have a license certificate file (license.d7cert or _license.cert):



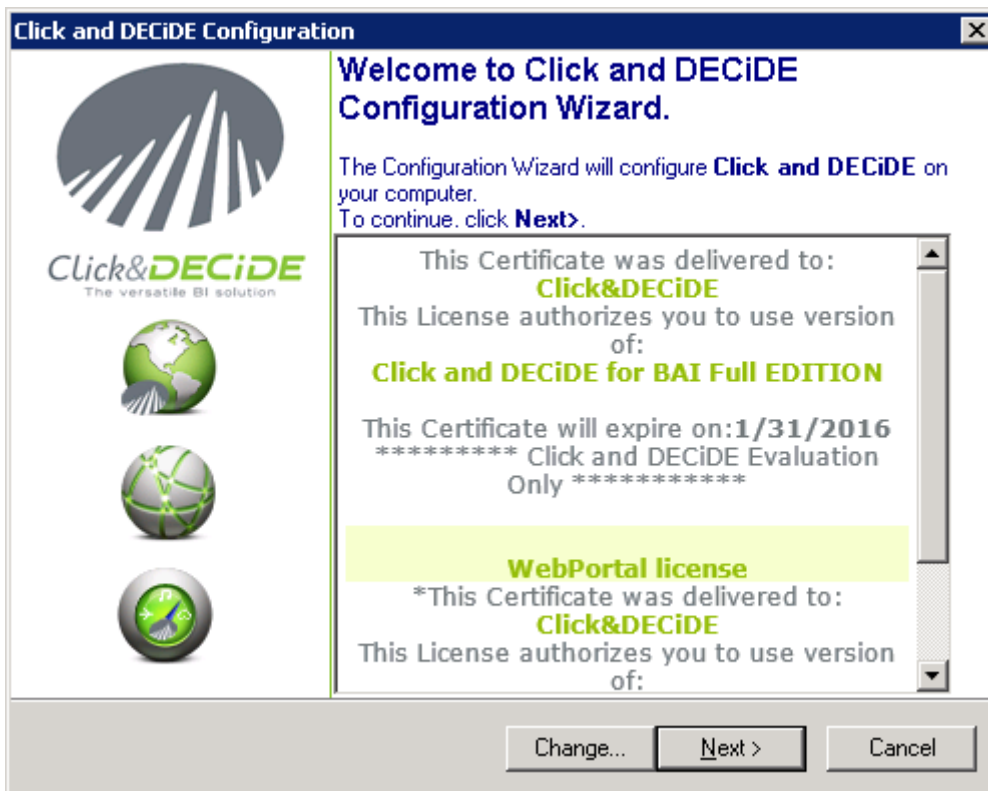
Note 1: if you wish to run later again this configuration wizard, run the command:

Start> All Programs> Click and DECiDE> Business Application Intelligence> Administration> Configuration Wizard





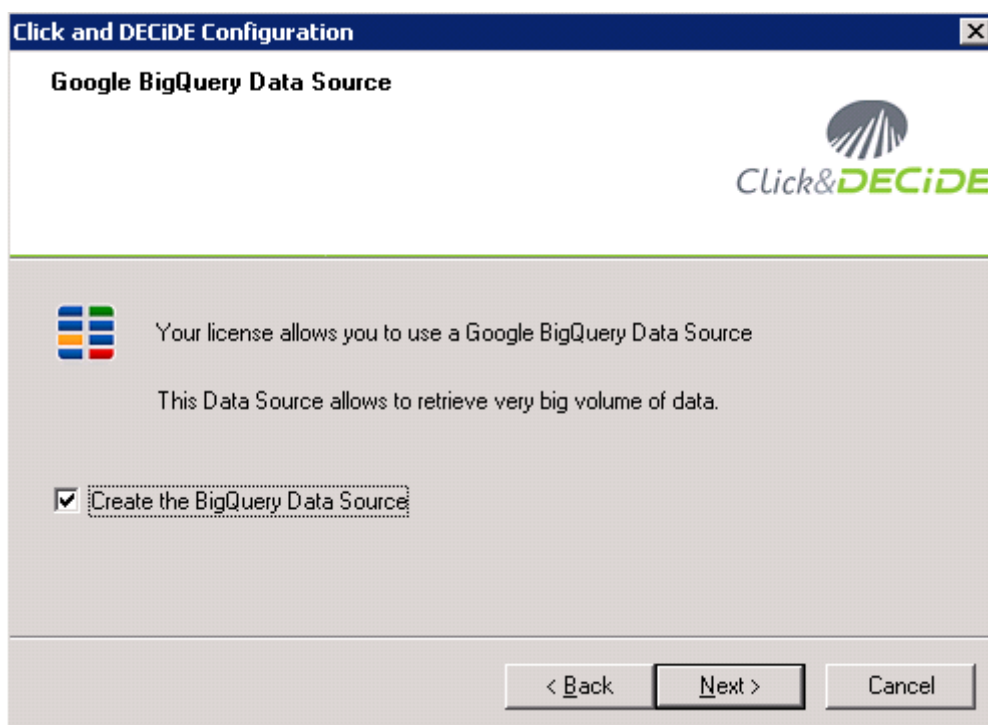
Note 2: if you double-click on a license certificate file named license.d7cert, that also will launch automatically the Configuration Wizard. Click **Next** until the end of all steps proposed as describe below.



11. Note the information concerning your license certificate will appear. In the example above, the license certificate displays information about the Company Name, the Edition used. The certificate also displays information about the Web Portal license if exists (for Enterprise Edition).

3.3.2. Optional Google BigQuery Data Source

12. Click **Next>** to continue. This optional screen will appear if your license certificate contain the option for **Google BigQuery Data Source**:





Uncheck this option if you do not want to create this Data Source now.

3.3.3. Authentication Mode and Mail Server

13. Click **Next>** to continue. The **Web Portal and Mail Configuration** screen appears.

14. Specify the **Web Portal Authentication Mode** you want to use.

Note: Windows Authentication selected by default is recommended by Click&DECiDE. If this option is greyed, that means it has not been activated in IIS.

15. If nevertheless you need to use the **Click and DECiDE Authentication**, the Options button will propose 3 choices:

If using a HTTP link:

- The **Forms Authentication**: the login goes through a Click&DECiDE form in the Web Portal page. The password is not encrypted and Data Source Login can be used to connect to the Web Portal.
- The **HTTP Digest Authentication**: the password is hashed. No Data Source Login can be used, but this mode is more secured than the Basic Authentication.



- The **HTTP Basic Authentication**: the password is not encrypted (clear text). A Data Source Login can be used to connect to the Web Portal.

If using a HTTPS link:

- In the 3 above modes, the password are encrypted or hashed.

16. Specify the **Mail Server Name**. Optional: if your Mail Server requires an Authentication, enter the required User ID and Password, otherwise leave blank.

17. Click **Test** to check your Mail Server Name.

SMTP Server Test

Server Name: NR7

Send a test mail

From:

To:

Test Close

Optional: you can send a test mail before clicking the **Test** button by checking on the box “Send a test mail” and feeding the **From** and **To** boxes with the appropriate e-mail addresses:

SMTP Server Test

Server Name: nrdc

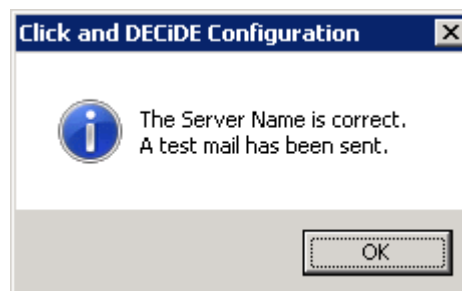
Send a test mail

From: sender@company.com

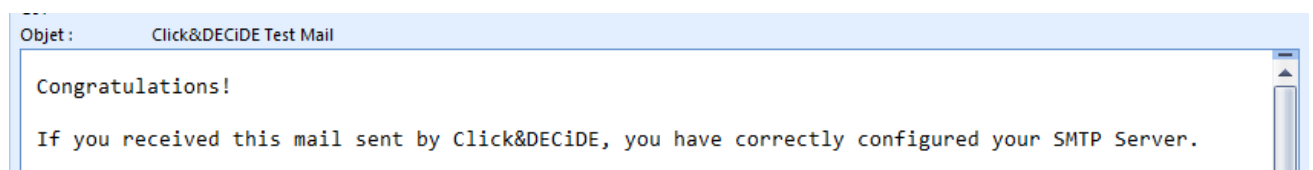
To: recipient@company.com

Test Close

If successful this message is displayed:



Then check your e-mail box to see if the message was sent correctly. If yes, you should receive this e-mail:

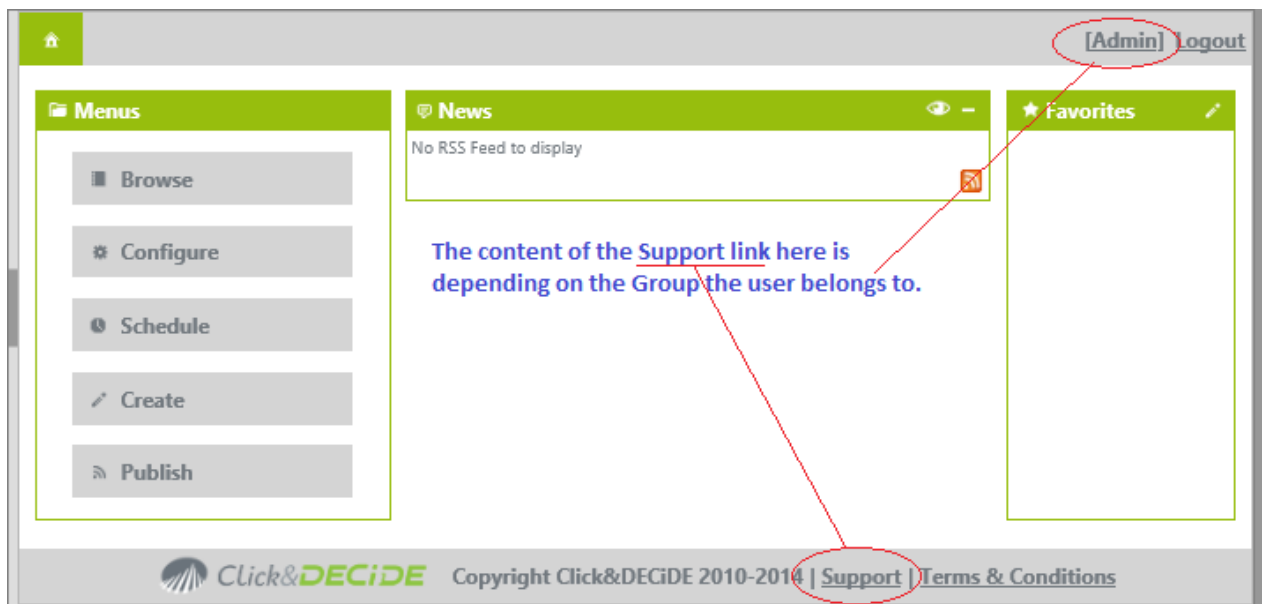




3.3.4. Optional Support configuration in the Web Portal for end-users

The screenshot shows a configuration window titled "Click and DECiDE Configuration". Inside, there's a section "Support Configuration in the Web Portal" with the text: "You can configure internal support for end-users (non-administrators) in the Web Portal." Below this is a checkbox "Configure internal support for end-users in the Web Portal" which is checked. Underneath is a "Support Information" form with fields for: Company (Click&DECiDE SAS), Address, Phone, Contact, Email (support@clickndecide.com), and Web Site (www.clickndecide.com). At the bottom are buttons for "< Back", "Next >", and "Cancel".

The above screen will be displayed through the Web Portal according to the current Group if the users press the <Support> link here:



If the Group is a "Super Administrator" Group, then clicking the Support link will display information about how to find support directly with Click&DECiDE Company.

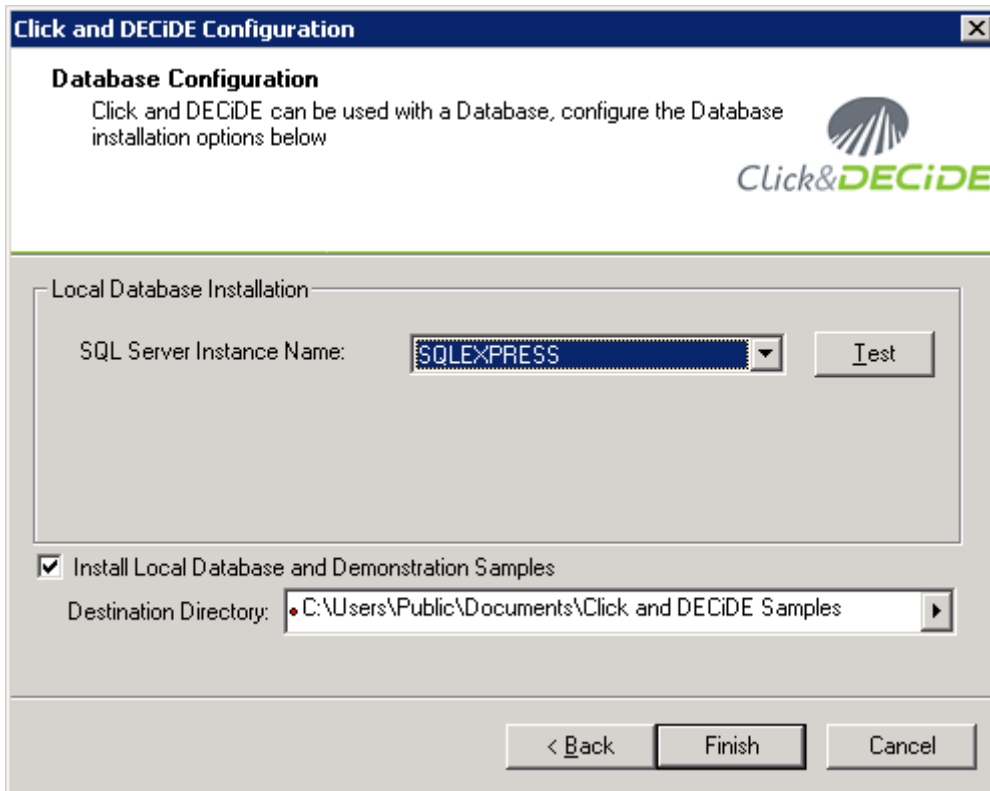
If the user does not belong to a Super Administrator Group, then the information displayed by the Support link is the you have entered here when installing the product.

Note: the "Company" name is mandatory, as well as "Phone" number OR "Email" address. Other fields are optional.



3.3.5. Local Database Configuration

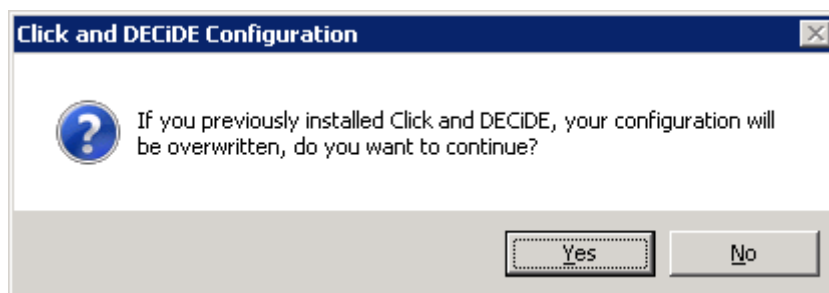
18. Click **Next>**. The **Local Database Configuration** screen appears.



19. Note the **SQL Server Instance Name** is SQL Express by default.

Note: this last step consists of inserting the required tables used by the Alerts and the Statistics Management Console and, optionally, the demonstration samples tables in the Local SQL Server. If you do not wish to install the demonstration samples, uncheck the “Install Local Database and Demonstration Samples”. These examples can give you some ideas about how to make some nice reports.

20. Click **Finish** to terminate the setup.

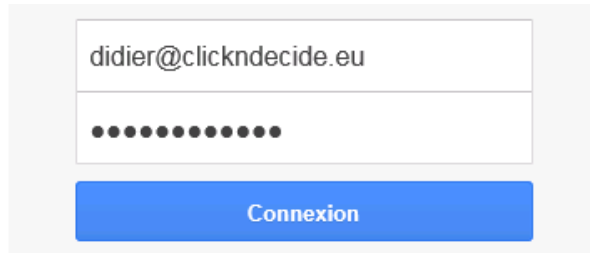


21. Click **Yes** to continue.

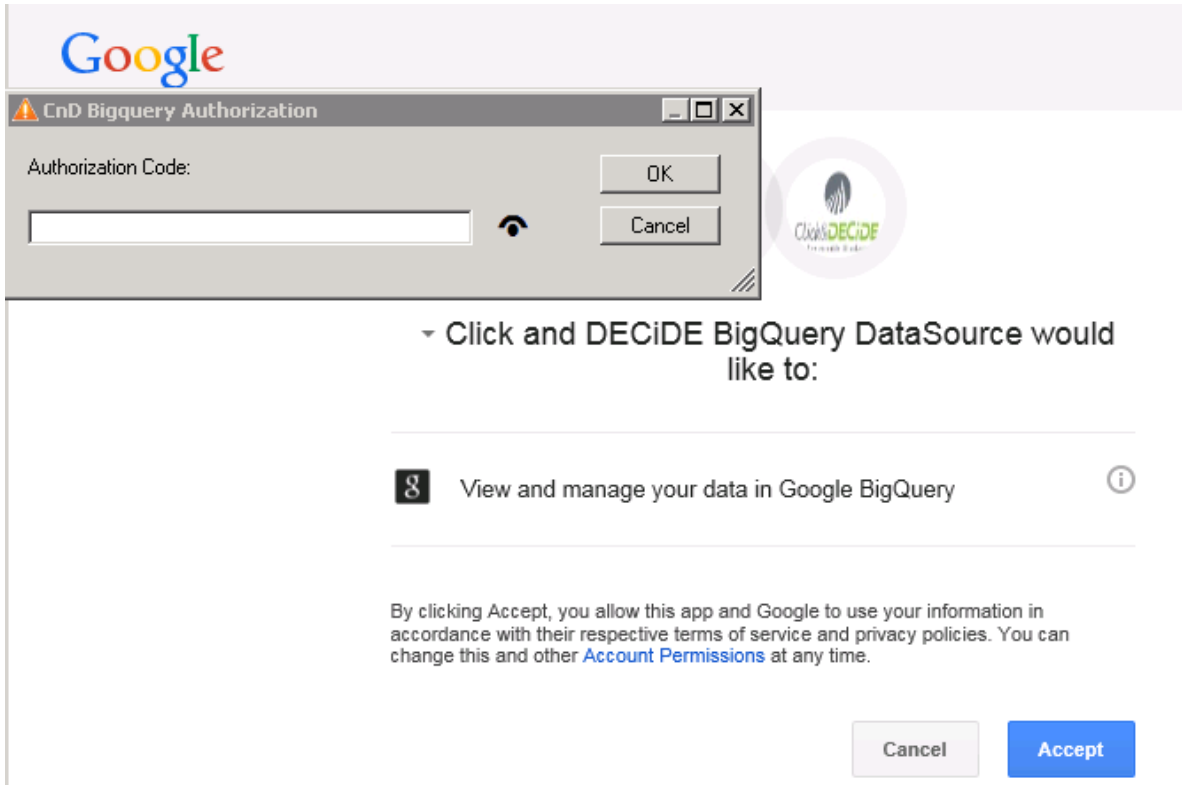
22. Optional: if the **Google BigQuery Data Source** has been activated at the beginning of the Configuration Wizard, the next screen is proposed in order to create this data source:



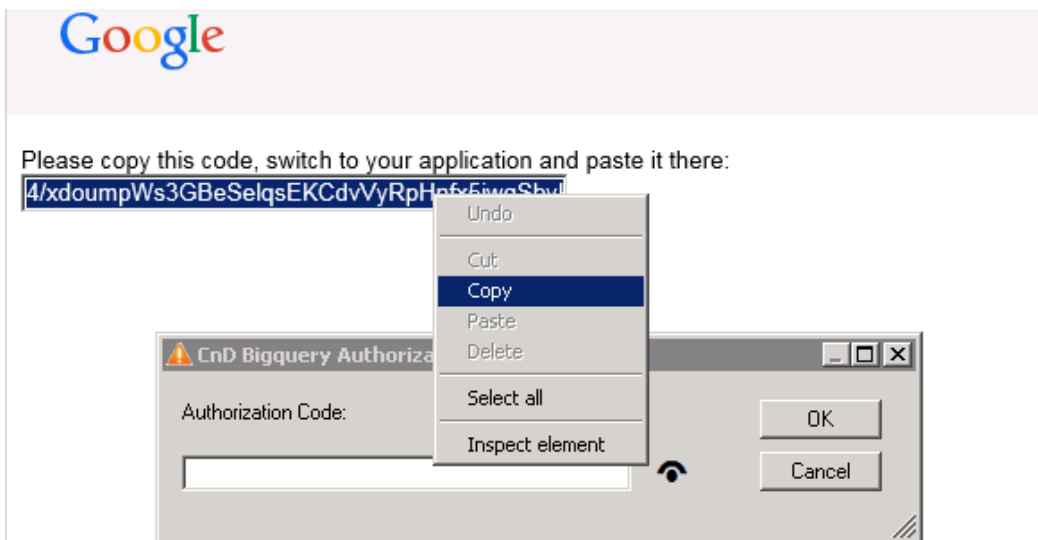
23. Connect to your **Google Account:**



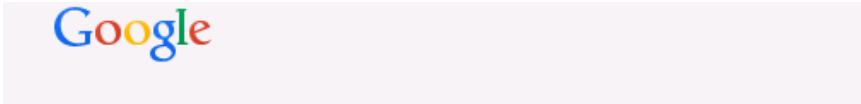
24. After a while this screen appears asking you to accept:



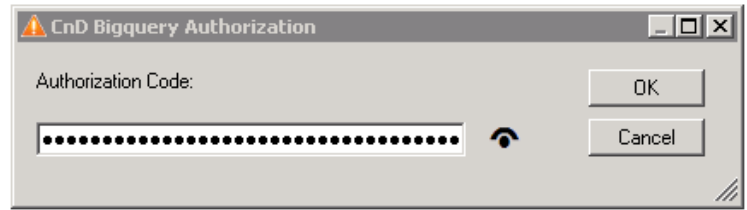
25. Click **Accept**> A box appears with a code and ask you to copy this code



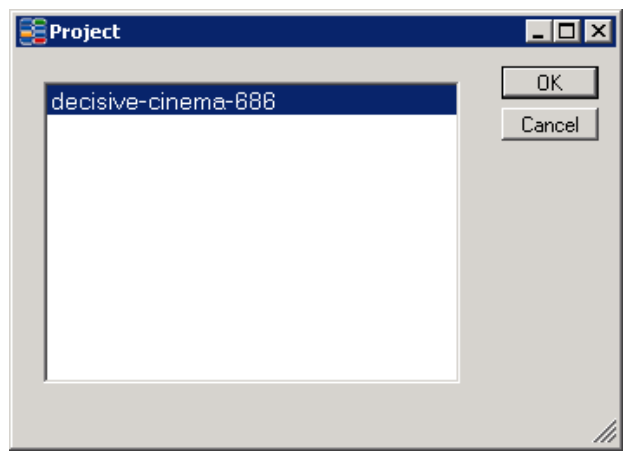
Make a right mouse click and select **Copy**: the code is copied in the CnD BigQuery Authorization box:



Please copy this code, switch to your application and paste it there:

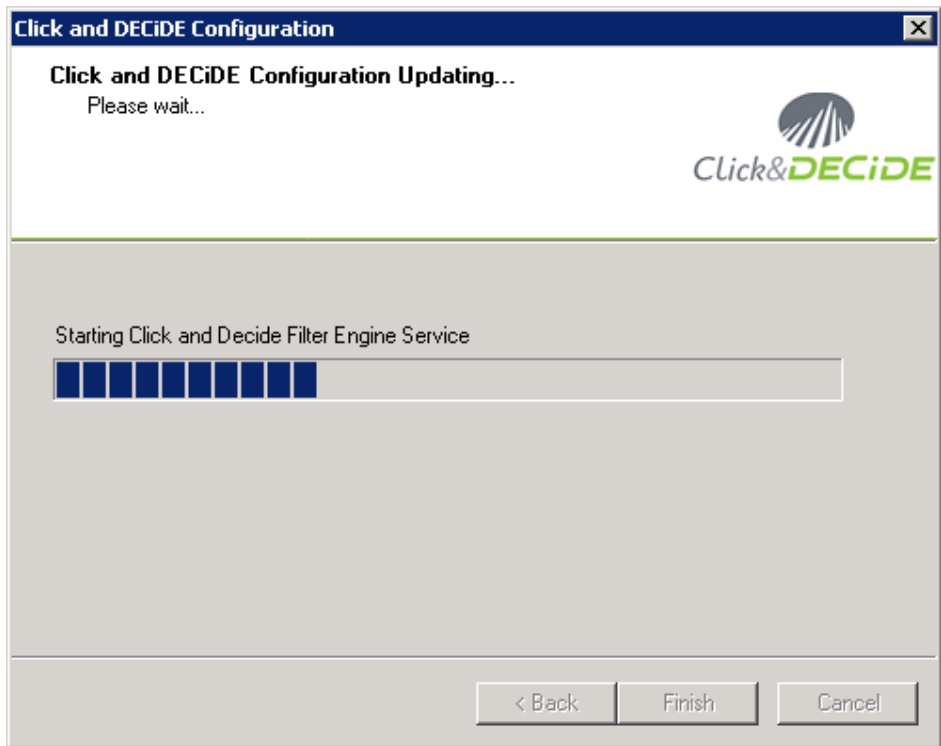


26. Click **OK**. After a while a windows ask you to select a Project:



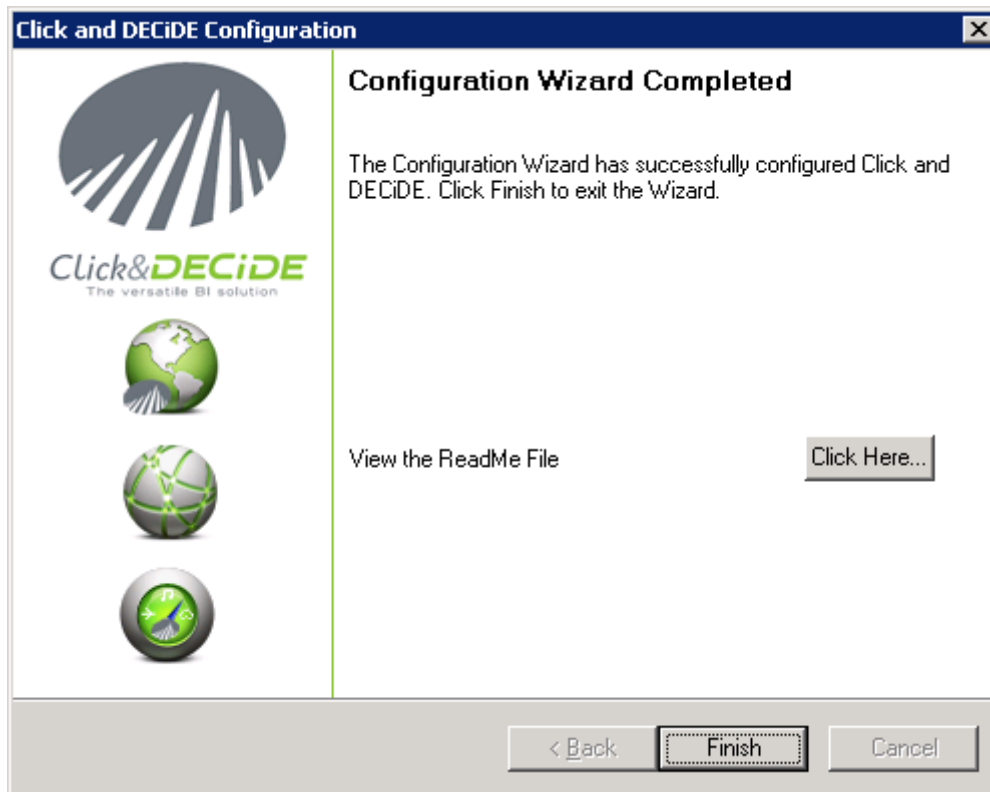
27. Select a **Project** and click **OK**.

28. The Configuration Wizard continues until the end.





29. The ReadMe file will be displayed if you click the “Click here” button



30. Click **Finish** to exit the configuration.

© 2010-2015 Click&DECiDE SAS. All rights reserved Click&DECiDE, Net Report, DataSet Report, DataSet Vision, and other DataSet products and services as well as their respective logos are trademarks or registered trademarks of Click&DECiDE SAS. All other company names, products and services used herein are trademarks or registered trademarks of their respective owners. The information published herein is subject to change without notice. This publication is for informational purposes only, without representation or warranty of any kind, and Click&DECiDE SAS shall not be liable for errors or omissions with respect to this publication. The only warranties for Click&DECiDE products and services are those that are set forth in the express warranty statements accompanying such products and services, if any. Nothing herein should be construed as constituting any additional warranty.